

## **Somatic embryogenesis**

The sporophytic generation of a plant is initiated with the zygote, which is the initial cell (product of gamete fusion) that bears all the genetic information to construct the adult individual. In angiosperms, the zygote divides transversally, resulting in two cells. One of them, the apical cell, is small and dense with an intense activity of DNA synthesis. Further ordinal divisions of this cell give rise to the embryo head that will be the new plant. The other resultant cell (basal cell) is a large and highly vacuolated one that will form the suspensor complex, which plays an important role during the early stages of the young embryo. *In vivo*-produced somatic embryos generally follow the same pattern; however, they are not initiated from a zygote, but from a somatic cell as occurs in the polyembryony.

### **Somatic embryos**

Somatic embryos are bipolar structures with both apical and basal meristematic regions, which are capable of forming shoot and root, respectively. A plant derived from a somatic embryo is sometimes referred to as an “embling”.

### **Somatic embryos vs zygotic embryos and their advantages**

Somatic embryos are structurally similar to zygotic embryos found in seeds and possess many of their useful features, including the ability to grow into complete plants. However, somatic embryos differ in that they develop from somatic cells, instead of zygotes (i.e., fusion product of male and female gametes) and thus, potentially can be used to produce duplicates of a single genotype. Since the natural seed develops as a result of a sexual process in cross-pollinating species, it is not genetically identical to one single parent. In contrast, somatic embryo develops from somatic cells (non-sexual) and does not involve sexual recombination. This characteristic of somatic embryos allows not only clonal propagation but also specific and directed changes to be introduced into desirable elite individuals by inserting isolated gene sequences into somatic cells. This bypasses genetic recombination and selection inherent in conventional breeding technology. If the production efficiency and convenience comparable to that of a true seed are achieved, somatic embryos can be potentially used as a clonal propagation system.

Somatic embryogenesis can be initiated by two mechanisms: directly on explanted tissues, where plants are genetically identical (clonation), and indirectly from unorganized tissues (callus). Propagation by indirect embryogenesis carries the risk of producing

plants that may differ genetically from each other and from the parental plant. It is thought that the occurrence of genetic variability within tissue cultures may partly originate from cellular changes that are induced during culture. The genetic variability associated with tissue and cell culture is named "somaclonal variation" and represents an opportunity where selection pressure can be imposed to isolate unique genetic forms of a clone. The ability to recover plants from single cells has made possible the genetic improvement *in vitro*. Plant tolerance to abnormal temperatures, herbicides, fungal toxins, high levels of salt, etc., can be obtained by exposing cell cultures to a selective agent. The most important advantages of the cell- and tissue-culture tools used in plant breeding are:

- Freedom from the effects of the natural environment.
- The ability to handle large numbers of individuals (cells) in very small spaces.
- Creation of variation within cultures. Variability usually occurs spontaneously; however, it can be induced by mutagenic agents.
- Genetic variability can be created deliberately in cultured cells by using genetic-engineering techniques.

## **Practical applications of somatic embryogenesis**

### **Clonal propagation**

Somatic embryogenesis has a potential application in plant improvement. Since both the growth of embryogenic cells and subsequent development of somatic embryos can be carried out in a liquid medium, it is possible to combine somatic embryo-genesis with engineering technology to create large-scale mechanised or automated culture systems. Such systems are capable of producing propagules (somatic embryos) repetitively with low labour inputs. In this process of repetitive somatic embryogenesis (also referred to as accessory, adventive, or secondary somatic embryogenesis) a cycle is initiated whereby somatic embryos proliferate from the previously existing somatic embryo in order to produce clones.

### **Cloning zygotic embryos for repetitive somatic embryogenesis**

A wide range of soybean genotypes have been tested for their ability to undergo auxin-stimulated somatic embryogenesis during cloning of zygotic embryos (Barwale *et al.* 1986; Komatsuda and Ohyama 1988). All of them are reported to form somatic embryos provided appropriate nutrients are provided in the medium. The role of genotypes in conferring regeneration capacity is further supported by studies on zygotic embryo cloning of wheat, rice and maize. Analysis of various cultivars demonstrated that

the regeneration capacity of these crops was directly affected by non-additive, additive and cytoplasmic factors. However, the genotype which has the capacity to undergo repetitive somatic embryogenesis can be back-crossed to elite lines in order to transform the latter with capacity for high regeneration of somatic embryos. Such a type of transformation could play an important role in plant breeding since through in vitro techniques high quality somatic embryos have been produced in 80 species of tropical crops.

### **Raising somaclonal variants in tree species**

Embryos formed directly from pre embryogenic cells appear to produce relatively uniform clonal material, whereas the indirect pathway generates a high frequency of somaclonal variants. Mutation during adventive embryogenesis may give rise to a mutant embryo which on germination would form a new strain of plant. Nucellar embryos, like shoot tips, are free of virus and can be used for raising virus-free clones, especially from some tree species (e.g., poly embryonate Citrus) where shoot tip culture has not been successful. For clonal propagation of tree species, somatic embryogenesis from nucellar cells may offer the only rapid means of obtaining juvenile plants equivalent to seedlings with parental genotype. Clonal propagation through somatic embryogenesis has been reported in 60 species of woody trees representing 25 families. Somatic embryos with genotype of a selected elite parent are potentially convenient organs for cryopreservation and germplasm storage.

### **Synthesis of artificial seeds**

The development of methods for encapsulation of somatic embryos to enable them to be sown under field conditions as 'synthetic' or 'artificial' seed is gaining importance. Research programmes on production of artificial seeds via somatic embryogenesis in respect of commercially important crops would not only contribute to increased agricultural production, but also add to our basic knowledge of the regulatory mechanisms which control plant growth and differentiation.

### **Source of regenerable protoplast system**

Embryogenic callus, suspension cultures and somatic embryos have been employed as sources of protoplast isolation for a range of species. Cells or tissues in these systems have demonstrated the potentiality to regenerate in cultures and, therefore, yield protoplasts that are capable of forming whole plants. Embryogenic cultures are especially

valuable in providing a source of regenerable protoplasts in the graminaceous, coniferous and citrus species. Attempts to achieve regeneration of callus or even sustained divisions in mesophyll-derived protoplasts of Gramineae proved unsuccessful until Vasil and Vasil (1980) turned to embryogenic cultures obtained from immature embryos of pearl millet (*Pennisetum purpureum*) as the source of protoplasts. Protoplasts from these cultures were induced to divide to form a cell mass from which embryoids, and even plantlets, regenerated on a suitable nutrient medium. Similar success was subsequently reported by other workers with embryogenic suspension of *Panicum maximum*, *Pennisetum purpureum*, *Oryza sativa*, *Saccharum officinarum*, *Lolium perenne*, *Festuca arundinaceae* and *Dactylis glomerata*. Among cereals, in Gramineae, the development of a protoplast regeneration system for maize has been especially challenging. Rhodes *et al.* (1988) were the first to raise protoplast derived maize plantlets from embryogenic cultures which, however, proved sterile. Later, Shillito *et al.* (1989) initiated embryogenic callus cultures from immature zygotic embryos of an elite inbred maize line B73, which yielded protoplasts that regenerated to form fertile plants. The protoplast-derived plant on crossing with pollen from a seed-derived plant produced viable seeds which germinated normally. Using similar techniques, Prioli and Sondahl (1989) obtained fertile maize plants from embryogenic cell suspension protoplasts of a line (Cat 100-1) adapted to tropical regions.

Embryogenic citrus suspension cultures also provide protoplasts that can be used in the production of interspecific and intergeneric somatic hybrid plants. Equal success can be obtained with protoplasts isolated from nucellus-callus culture of this plant. Ability to isolate protoplasts from embryogenic cultures has had a large impact on their *in vitro* culture of forest trees, e.g., *Pinus taeda*, *Picea glauca*, *P. mariana*, *Pseudotsuga menziesii*, *Abies alba*, *Santalum album* and *Liriodendron tulipifera*. Somatic embryos induced on the protoplast-derived calli also germinate to form plantlets which finally establish in the soil.

### **Genetic transformation**

In seed embryogenesis, zygotic embryos are seated deep inside the nucellar tissue. They live in a protected environment besides being genetically heterogeneous. On the contrary, somatic embryos remain virtually unprotected and more or less give rise to genetically uniform plants. The advent of leaf-disc transformation systems has made it possible to successfully engineer species (*Nicotiana tabacum*, *Medicago sativa*) in which, tissues are

capable of regeneration *via* somatic embryogenesis.

In these species, isolated single cells can be transformed in cultures and grown on a selection medium (nutrient medium containing an antibiotic, kanamycin) to callus colonies which eventually form somatic embryos on removal of auxin from this medium (Chabaud *et al.*, 1988). Since the callus phase seems essential in this type of indirect somatic embryogenesis, the possibility of chimeric embryos arising from transformed and non-transformed tissues cannot be ruled out. Therefore, the callus phase can be bypassed through a process of repetitive somatic embryogenesis. McGranahan *et al.* (1990) used repetitive embryogenesis for *Agrobacterium*-transformed walnut (*Juglans regia* L.) cells and obtained multiple crops of somatic embryos without employing the callus phase.

There is also evidence to show that repetitive embryos originate from single epidermal or subepidermal cells which can be readily exposed to *Agrobacterium*. Thus, the transformation technique applied to a primary somatic embryo, instead of a zygotic embryo, should give rise to totally transgenic somatic embryos. Repetitive embryogenesis is also ideally suited to particle gun-mediated genetic transformation. Instead of relying on *Agrobacterium* to mediate the transfer of genes into plant cells, the particle gun literally shoots DNA that has been precipitated onto particles of a heavy metal, into the plant cells. Embryogenic suspension cultures of cotton and soybean, initiated from immature embryos, yielded an average of 30 stably transformed cell lines following each firing of the gun. The transformed cell lines can then be induced to form an unlimited number of transformed somatic embryos through repetitive embryogenesis.

### **Synthesis of metabolites**

The repetitive embryogenesis system is of potential use in the synthesis of metabolites such as pharmaceuticals and oils. Borage (*Borage officinalis* L.) seeds contain high levels of  $\gamma$ -linolenic acid, used in the treatment of atopic eczema. Somatic embryos of borage also produce this metabolite but through repetitive somatic embryogenesis a continuous supply of  $\gamma$ -linolenic acid is ensured, which otherwise would be limited to the growing season in the zygotic embryo. The same principle can be applied for production *in vitro* of industrial lubricants from jojoba (*Simmondsia chinensis*) and leopalmistearin (the major ingredient in cocoa butter) from Cacao (*Theobroma cacao*).

The *in vivo* clonal propagation of plants is often difficult, expensive and even unsuccessful. Tissue culture methods offer an alternative means of plant vegetative propagation. Clonal propagation through tissue culture (popularly called micropropagation) can be achieved in a short time and space. This is possible through somatic embryogenesis by which rapid formation of embryos takes place leading to multiplication of shoots.

## **Synthetic seed production**

### **Need for artificial or synthetic seed production technology**

Development of micropropagation techniques will ensure abundant supply of the desired plant species. In some crop species seed propagation has not been successful. This is

#### **Box 1. Characteristics of Clonal Propagation Systems**

##### **Micropropagation**

- Low volume, small scale propagation method
- Maintains genetic uniformity of plants
- Acclimatisation of plantlets required prior to field planting
- High cost per plantlet
- Relatively low multiplication rate

##### **Greenhouse cuttings**

- Low volume, small scale propagation method
- Maintains genetic uniformity of plants
- Rooting of plantlets required prior to field planting
- High cost per plantlet
- Multiplication rate limited by mother plant size

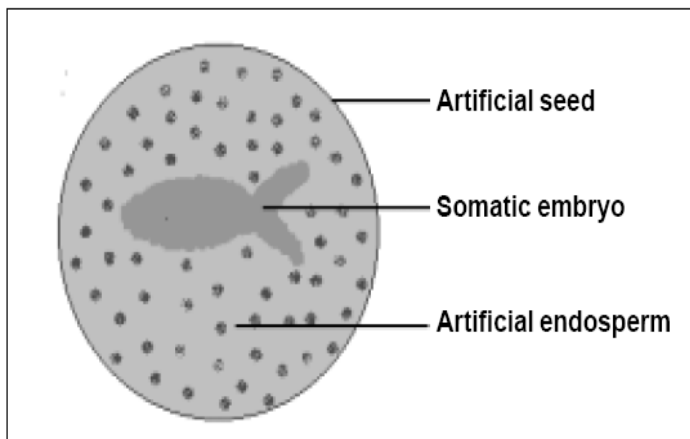
##### **Artificial seeds**

- High volume, large scale propagation method
- Maintains genetic uniformity of plants
- Direct delivery of propagules to the field, thus eliminating transplants
- Lower cost per plantlet
- Rapid multiplication of plants.

mainly due to heterozygosity of seed, minute seed size, presence of reduced endosperm and the requirement of seed with mycorrhizal fungi association for germination (eg. orchids), and also in some seedless varieties of crop plants like grapes, watermelon, etc. Some of these species can be propagated by vegetative means. However, *in vivo* vegetative propagation techniques are time consuming and expensive. Development of

artificial seed production technology is currently considered as an effective and efficient alternate method of propagation in several commercially important agronomic and horticultural crops. It has been suggested as a powerful tool for mass propagation of elite plant species with high commercial value. Characteristics of clonal propagation systems are discussed in Box 1.

Artificial seed technology involves the production of tissue culture derived somatic embryos encased in a protective coating. Artificial seeds have also been often referred to as synthetic seeds. However, the term synthetic seed should not be confused with commercial seeds of a synthetic cultivar which is defined as an advanced generation of an open pollinated population composed of a group of selected inbred clones or hybrids. The concept of artificial or synthetic seed is shown in Figure.



These synthetic seeds would also be a channel for new plant lines produced through biotechnological advances to be delivered directly to the greenhouse or field. Advantages of artificial/synthetic seeds over somatic embryos for propagation are listed in Box 2. This synthetic

seed production technology is a high volume, low-cost production technology. High volume propagation potential of somatic embryos combined with formation of synthetic seeds for low-cost delivery would open new vistas for clonal propagation in several commercially important crop species.

**Box.2. Advantages of Artificial or Synthetic Seeds over Somatic Embryos for Propagation**

- Ease of handling while in storage
- Easy to transport
- Has potential for long term storage without losing viability
- Maintains the clonal nature of the resulting plants
- Serves as a channel for new plant lines produced through biotechnological advances to be delivered directly to the greenhouse or field
- Allows economical mass propagation of elite plant varieties.

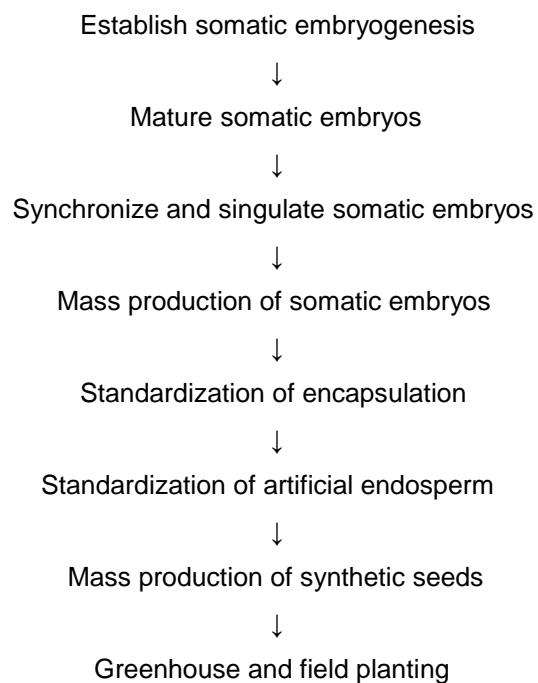
### **Basic requirement for production of artificial seeds**

Recently, production of synthetic seeds by encapsulating somatic embryos has been reported in few species. One prerequisite for the application of synthetic seed technology in micropropagation is the production of high-quality, vigorous somatic embryos that can produce plants with frequencies comparable to natural seeds. Inability to recover such embryos is often a major limitation in the development of synthetic seeds.

Synthetic seed technology requires the inexpensive production of large numbers of high quality somatic embryos with synchronous maturation. The overall quality of the somatic embryos is critical for achieving high conversion frequencies. Encapsulation and coating systems, though important for delivery of somatic embryos, are not the limiting factors for development of synthetic seeds.

At present, the characteristic lack of developmental synchrony in embryogenic systems stymies multi-step procedures for guiding somatic embryos through maturation. The lack of synchrony of somatic embryos is, arguably, the single most important hurdle to be overcome before advances leading to widespread commercialization of synthetic seeds can occur. Synchronized embryoid development is required for the efficient production of synthetic seeds.

### **Procedure for production of artificial seeds**





### **Types of somatic embryos**

Two types of artificial seeds have been developed, namely, hydrated and desiccated. Redenbergh et al. (1986) developed hydrated artificial seeds by mixing somatic embryos of alfalfa, celery and cauliflower with sodium alginate, followed by dropping into a solution of calcium chloride to form calcium-alginate beads. The beads become hardened as calcium alginate is formed. After about 20-30 min. the artificial seeds are removed, washed with water and used for planting. Hydrated artificial seeds are sticky and difficult to handle on a large scale, dry rapidly in the open air. These problems can be resolved by providing a waxy coating over the beads. However, it is not possible to store, except at low temperatures and for limited periods, hydrated artificial seeds and they have to be planted soon after they are produced. Precision machines for large scale encapsulation of SEs have been devised.

Kim and Janick (1989) applied synthetic seed coats to clumps of carrot somatic embryos to develop desiccated artificial seeds. They mixed equal volumes of embryo suspension and 5% solution of polyethylene oxide (polyox WSR N-750), a water-soluble resin, which subsequently dried to form polyembryonic desiccated wafers. The survival of encapsulated embryos was further achieved by embryo hardening treatments with 12% sucrose or 10<sup>-6</sup>M ABA, followed by chilling at high inoculum density.

Another delivery system for somatic embryos for obtaining transgenic plants is Fluid-drilling. Embryos are suspended in a viscous-carrier gel which extrudes into the soil. The primary problem in fluid-drilling is that the sucrose level necessary to permit conversion also promotes rapid growth of contaminating micro-organisms in a non-aseptic system. Gray (1987) found that somatic embryos of orchard grass (*Dactylis glomerata*) became quiescent when desiccated in empty plastic petri dishes at 70% relative humidity at 23°C which amounted to loss of 13% water. However, after 21 days of storage, desiccated embryos when rehydrated *in vitro* germinated to produce viable plantlets though limited (4%) in number. Senaratna *et al* (1990) treated alfalfa somatic embryos with ABA at the torpedo to cotyledonary stages in order to increase their tolerance to desiccation. Over 60% of such desiccated embryos germinated when placed on a moist filter paper or sown directly onto sterile soil and formed plantlets. Heat-shock treatments also induced a degree of desiccation tolerance comparable to that conferred by ABA treatment and had no detrimental effect on the subsequent growth of the plantlets.

In general, the gels contain inorganic nutrients, a carbon source, fungicides, bactericides

and other growth promoting substances necessary for SE germination and seedling establishment in the field. When shoot buds are encapsulated, growth regulators needed for rooting and shoot growth are also included. The SE must be of good quality to be able to germinate in a high frequency under field/ greenhouse conditions. Alfalfa is the most extensively investigated plant species in this regard.

### **Types of gelling agents used for encapsulation**

Several gels like agar, alginate, polyco 2133 (Bordon Co.), carboxy methyl cellulose, carrageenan, gelrite (Kelko. Co.), guar gum, sodium pectate, tragacanth gum, etc. were tested for synthetic seed production, out of which alginate encapsulation was found to be more suitable and practicable for synthetic seed production. Alginate hydrogel is frequently selected as a matrix for synthetic seed because of its moderate viscosity and low spin ability of solution, low toxicity for somatic embryos and quick gelation, low cost and bio-compatibility characteristics. The use of agar as gel matrix was deliberately avoided as it is considered inferior to alginate with respect to long term storage. Alginate was chosen because it enhances capsule formation and also the rigidity of alginate beads provides better protection (than agar) to the encased somatic embryos against mechanical injury. Alginate encapsulated somatic embryos of orchids are shown in Figure 1 and the plantlets derived from artificial or synthetic seeds of orchid are shown in Figure 2.

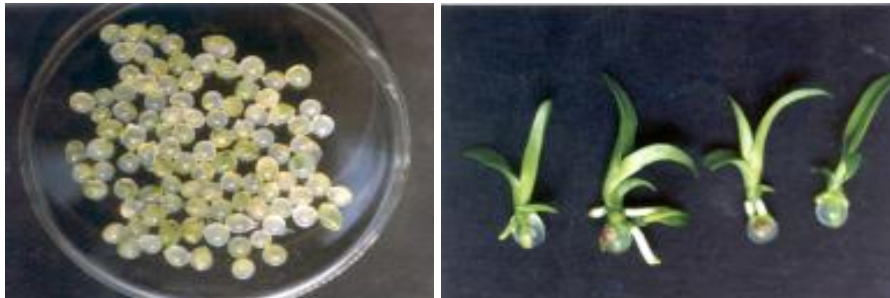


Figure 1 (left). Artificial or synthetic seed produced in orchids by alginate encapsulation.

Figure 2 (right). Artificial or synthetic seed derived plantlets in orchid.

### **Principle and conditions for encapsulation with alginate matrix**

Alginate is a straight chain, hydrophilic, colloidal polyuronic acid composed primarily of hydro- $\alpha$ -D-mannuronic acid residues with 1-4 linkages. The major principle involved in the alginate encapsulation process is that the sodium alginate droplets containing the

somatic embryos when dropped into the  $\text{CaCl}_2 \cdot 2\text{H}_2\text{O}$  solution form round and firm beads due to ion exchange between the  $\text{Na}^+$  in sodium alginate with  $\text{Ca}^{2+}$  in the  $\text{CaCl}_2 \cdot 2\text{H}_2\text{O}$  solution. The hardness or rigidity of the capsule mainly depends upon the number of sodium ions exchanged with calcium ions. Hence, the concentration of the two gelling agents i.e., sodium alginate and  $\text{CaCl}_2 \cdot 2\text{H}_2\text{O}$ , and the complexing time should be optimized for the formation of the capsule with optimum bead hardness and rigidity. In general, 3% sodium alginate upon complexation with 75 mM  $\text{CaCl}_2 \cdot 2\text{H}_2\text{O}$  for half an hour gives optimum bead hardness and rigidity for the production of viable synthetic seeds.

### **Artificial endosperm**

Somatic embryos lack seed coat (testa) and endosperm that provide protection and nutrition for zygotic embryos in developing seeds. To augment these deficiencies, addition of nutrients and growth regulators to the encapsulation matrix is desired, which serves as an artificial endosperm. Addition of nutrients and growth regulators to the encapsulation matrix results in increase in efficiency of germination and viability of encapsulated somatic embryos. These synthetic seeds can be stored for a longer period of time even up to 6 months without losing viability, especially when stored at 4 °C.

### **Addition of adjuvants to the matrix**

In addition to preventing the embryo from desiccation and mechanical injury, a number of useful materials such as nutrients, fungicides, pesticides, antibiotics and microorganisms (eg. rhizobia) may be incorporated into the encapsulation matrix. Incorporation of activated charcoal improves the conversion and vigour of the encapsulated somatic embryos. It has been suggested that charcoal breaks up the alginate and thus increases respiration of somatic embryos (which otherwise lose vigour within a short period of storage). In addition, charcoal retains nutrients within the hydrogel capsule and slowly releases them to the growing embryo.

### **Utilization of artificial seeds**

The artificial seeds can be used for specific purposes, notably multiplication of non-seed producing plants, ornamental hybrids (currently propagated by cuttings) or the propagation of polyploid plants with elite traits. The artificial seed system can also be employed in the propagation of male or female sterile plants for hybrid seed production. Cryo-preserved artificial seeds may also be used for germplasm preservation, particularly in recalcitrant species (such as mango, cocoa and coconut), as these seeds will not

undergo desiccation. Furthermore, transgenic plants, which require separate growth facilities to maintain original genotypes may also be preserved using somatic embryos. Somatic embryogenesis is a potential tool in the genetic engineering of plants. Potentially, a single gene can be inserted into a somatic cell. In plants that are regenerated by somatic embryos from a single transgenic cell, the progeny will not be chimeric. Multiplication of elite plants selected in plant breeding programs via somatic embryos avoids the genetic recombination, and therefore does not warrant continued selection inherent in conventional plant breeding, saving considerable amount of time and other resources. Artificial seeds produced in tissue culture are free of pathogens. Thus, another advantage is the transport of pathogen free propagules across the international borders avoiding bulk transportation of plants, quarantine and spread of diseases.

### **Potential uses of artificial seeds**

#### **Delivery systems**

- Reduced costs of transplants
- Direct greenhouse and field delivery of:
  - Elite, select genotypes
  - Hand-pollinated hybrids
  - Genetically engineered plants
  - Sterile and unstable genotypes
- Large-scale mono cultures
- Mixed-genotype plantations
- Carrier for adjuvants such as microorganisms, plant growth regulators pesticides, fungicides, nutrients and antibiotics
- Protection of meiotically-unstable, elite genotypes
- Can be conceivably handled as seed using conventional planting equipment.

#### **Analytical tools**

- Comparative aid for zygotic embryogeny
- Production of large numbers of identical embryos
- Determination of role of endosperm in embryo development and germination
- Study of seed coat formation
- Study of somaclonal variation.

### **Applicability and feasibility of artificial seed production technology**

In order to be useful, synthetic seed must either reduce production costs or increase crop value. The relative benefits gained, when weighed against development costs, will determine whether its use is justified for a given crop species. Considering a combination of factors, including improvement of the existing embryogenic systems, relative cost of seed as well as specific application for synthetic seed allows judgement of relative need for a given crop. For example, synthetic seed of seedless watermelon would actually cost less than conventional seed, providing a benefit at the outset of crop production. Although embryogenic systems for this crop do not exist, the benefit that could be conferred by use of synthetic seed would be very great. Value added aspects that would increase crop worth are numerous and include cloning of elite genotypes, such as genetically engineered varieties, that cannot produce true seed.

## Questions

1. A plant derived from a somatic embryo is referred as .....
  - a). Seedling
  - b). Embling
  - c). Both a and b
  - d). None of the above
  
2. Somatic embryos are .....
  - a). Bipolar structures
  - b). Have apical and basal meristematic regions
  - c). Capable of forming shoot and root
  - d). All the above**
  
3. Synthetic seeds are of ..... types
  - a). Hydrated
  - b). Dessicated
  - c). Both a and b**
  - d). None of the above
  
4. Hydrated synthetic seeds are developed by .....
  - a). Redenbergh**
  - b). Kim and Janick
  - c). Both a and b
  - d). None of the above
  
5. Dessicated synthetic seeds are developed by .....
  - a). Redenbergh
  - b). Kim and Janick**
  - c). Both a and b
  - d). None of the above
  
6. Hydrated artificial seeds are .....
  - a). Sticky
  - b). Dry rapidly in the open air
  - c). Difficult to handle on a large scale
  - d). All the above**
  
7. Gels used for synthetic seed production includes.....
  - a). Agar and alginate
  - b). Polyco 2133
  - c). Carboxy methyl cellulose
  - d). All the above**
  
8. Gels used for synthetic seed production includes.....
  - a). Carrageenan and gelrite
  - b). Sodium pectate
  - c). Guargum
  - d). All the above**
  
9. Alginate hydrogel is frequently selected as a matrix for synthetic seed because of its .....
  - a). moderate viscosity and low spin ability of solution
  - b). low toxicity for somatic embryos and quick gelation
  - c). low cost and bio-compatibility characteristics
  - d). All the above**

10. Gels used for synthetic seed production includes.....

- a). Carrageenan and gelrite
- b). Sodium pectate
- c). Guargum
- d). All the above**

11. Incorporation of activated charcoal in synthetic seed coating improves .....

- a). Conversion and vigour of the encapsulated somatic embryos
- b). Increases respiration of somatic embryos
- c). Retains nutrients within the hydrogel capsule and slowly releases them to the growing embryo
- d). All the above**

12. The artificial seeds can be used for specific purposes viz., .....

- a). Multiplication of non-seed producing plants
- b). Propagation of male or female sterile plants for hybrid seed production
- c). Propagation of polyploid plants with elite traits
- d). All the above**